

Plastic clip fitting assembly:



1. Thread the strap through the plastic fitting, from the side into the slot.



2. Thread the strap through the plastic fitting, from the top into the slot.



3. Thread the strap through the plastic fitting, from the bottom into the slot.



4. Push both ends of the strap up, until they are fully seated in the plastic fitting.



5. Push the strap into the hole until it is fully seated in the plastic fitting.

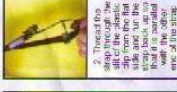


6. Push the strap into the hole until it is fully seated in the plastic fitting.

Plastic hook fitting assembly:



1. Thread the strap through the plastic fitting, from the side into the slot.



2. Thread the strap through the plastic fitting, from the top into the slot.



3. Thread the strap through the plastic fitting, from the bottom into the slot.



4. Push both ends of the strap up, until they are fully seated in the plastic fitting.

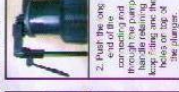


5. Push the strap into the hole until it is fully seated in the plastic fitting.

Connecting rod assembly:



1. Position the pump handle into the slot on the top of the plunger.



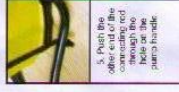
2. Push the strap through the plastic fitting, from the side into the slot.



3. Thread the strap through the plastic fitting, from the top into the slot.



4. Push both ends of the strap up, until they are fully seated in the plastic fitting.



5. Push the strap into the hole until it is fully seated in the plastic fitting.

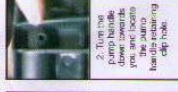


6. Push the strap into the hole until it is fully seated in the plastic fitting.

Pump handle assembly:



1. Insert the pump handle into the slot on the top of the plunger.



2. Tighten the strap down until it is fully seated in the plastic fitting.



3. Push the strap through the plastic fitting, from the side into the slot.



4. Push both ends of the strap up, until they are fully seated in the plastic fitting.

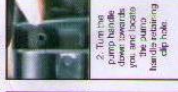


5. Push the strap into the hole until it is fully seated in the plastic fitting.



6. Push the strap into the hole until it is fully seated in the plastic fitting.

Hose and lance assembly:



1. Screw the lance into the pump handle until it is fully seated.



2. Push the lance into the pump handle until it is fully seated.



3. Push the lance into the pump handle until it is fully seated.



4. Push the lance into the pump handle until it is fully seated.



5. Push the lance into the pump handle until it is fully seated.

Spare Parts List



1x Metal Washer



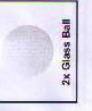
1x Pump Handle Retainer Clip



1x Plunger Cup



2x 18mm Rubber Washer



2x Glass Ball



2x 14mm Rubber Washer



1x Split Pin

14mm Rubber washer replacement



1. Unscrew the nozzle from the pump handle.



2. Locate the washer on the pump handle.



3. Push the nozzle back into place, ensuring the washer is seated.

18mm Rubber washer replacement



1. Unscrew the nozzle from the pump handle.



2. Locate the washer on the pump handle.



3. Push the nozzle back into place, ensuring the washer is seated.

Plunger cup replacement



1. Remove the plunger cup from the pump handle.



2. Replace the plunger cup with the new one.



3. Push the plunger cup back into place, ensuring it is seated.

Glass ball in cylinder replacement



1. Remove the glass ball from the cylinder.



2. Replace the glass ball with the new one.



3. Push the glass ball back into place, ensuring it is seated.

Please see the left spare parts (included) and their purpose and instructions for replacement below.

Glass ball in plunger - to replace follow the steps for the plunger cup. Metal washer and split pin - to replace follow the steps for the connection rod assembly.

Please read this information carefully and retain

WARNING!

Always wear protective gloves and goggles when using chemicals

Operating Instructions

1. Ensure the backpack is empty, adjust the shoulder straps and ensure the backpack sprayer fits comfortably before filling compartment with water.
2. Whilst removing the filler cap, ensure the filler remains in place. Fill the compartment to the desired level, DO NOT exceed the maximum fill level.
3. Once the desired level is reached screw the filler cap firmly on to create an airtight seal. (this allows for maximum pressure to be achieved)
4. Securely fit the sprayer onto your back and remove the spray lance from its holder. Hold securely in your right hand. Then release the pump handle, this achieved by removing the retaining loop.
5. Pump the handle for up to 6-8 times to produce the pressure required in the compartment. Once the pressure sprayer is pressurised it is ready for operation.
6. Depress the trigger on the lance handle to allow spraying to commence. Either use the sprayer in this method or lock the trigger in the open position by sliding the locking clip into place.
7. Depending on the type of spray required, you can operate the sprayer with a single jet nozzle, twin head single jet nozzle or a 4 jet nozzle.
8. Maintaining pressure whilst spraying can be achieved with 2-3 pumps of the handle during 10 - 15 seconds of spraying.

Maintenance Instructions - After use and before storage!

1. Release the pressure from the container by holding down the trigger on the lance until no more solution or air is dispensed from the nozzle.
2. Pour away the remaining solution from the compartment and wash out, this will allow it to be clean for future use.
3. Please apply lubricant to the outside of plunger on a regular basis to ensure that it moves smoothly and prevents leakage.
4. Keep this sprayer out of direct sunlight and in a shaded area.



Knapsack Pressure Sprayer

Operating Instructions

(please read before use and retain)

