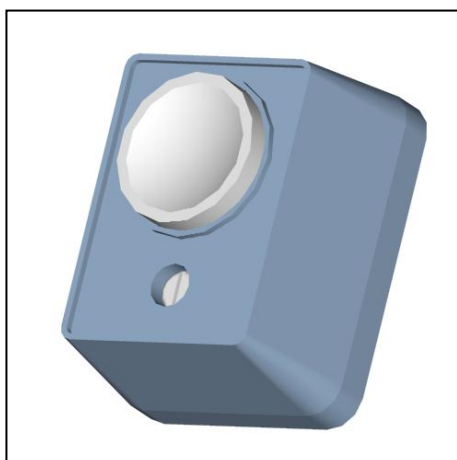


APARATAJ ELECTRIC DE JOASA TENSIUNE DIVERSE APARATE ELECTRICE LOW VOLTAGE ELECTRICAL APPARATUS VARIED ELECTRICAL APPARATUS

Produs
Product

Denumire / Caracteristici
Denomination/ Characteristics

Tip / Cod
Type/ Code



BUTON SONERIE

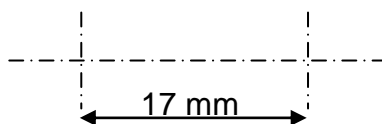
BS
N-95277

- Destinat comenzilor de inchidere si deschidere a circuitului electric aferent soneriei

CARACTERISTICI TEHNICE

- Tensiunea nominala de utilizare : max. 250 V ca
- Curentul nominal : 0.4 A
- Temperatura in timpul utilizarii : $-30^{\circ} \div +40^{\circ}C$
- Gradul de protectie : IP 40
 - produsul corespunde prevederilor SR EN 60669-1:2002
- **Conditii de functionare:**
 - temperatura: $-5^{\circ} \dots +40^{\circ}C$
 - umiditatea relativa a aerului: maxim 80% la $+20^{\circ}C$

DETALIUL DE MONTARE



EXEMPLU DE COMAND~ :

Buton sonerie
Denumire

BS
Simbol

N-95277
Cod

S.C. RELEE S.A.

551061 Media] – ROM^NIA

Str. Gloria nr.5

Tel. 069 / 845901, 2, 3

Fax. 069 / 831231

e-mail: office@relee.ro

N-443085