



# DAEWOO

POWER PRODUCTS

## DAWF15L

### WATER FILTRATION VACUUM CLEANER



## USER'S MANUAL

[www.daewoopowerproducts.com](http://www.daewoopowerproducts.com)

Manufactured under license of Daewoo International Corporation, Korea

## INDEX

<b>1. IMPORTANT SAFETY INSTRUCTIONS .....</b>	<b>2</b>
<b>2. PARTS DESCRIPTION .....</b>	<b>2</b>
<b>3. OPERATION INSTRUCTIONS .....</b>	<b>3</b>
<b>4. FILTER CLEANING.....</b>	<b>6</b>
<b>5. IMPORTANT INFORMATION FOR CORRECT DISPOSAL OF THE PRODUCT.....</b>	<b>6</b>
<b>6. TECHNICAL DATA .....</b>	<b>6</b>
<b>7. EXPLODE VIEW AND PART LIST .....</b>	<b>7</b>
<b>WARRANTY .....</b>	<b>9</b>

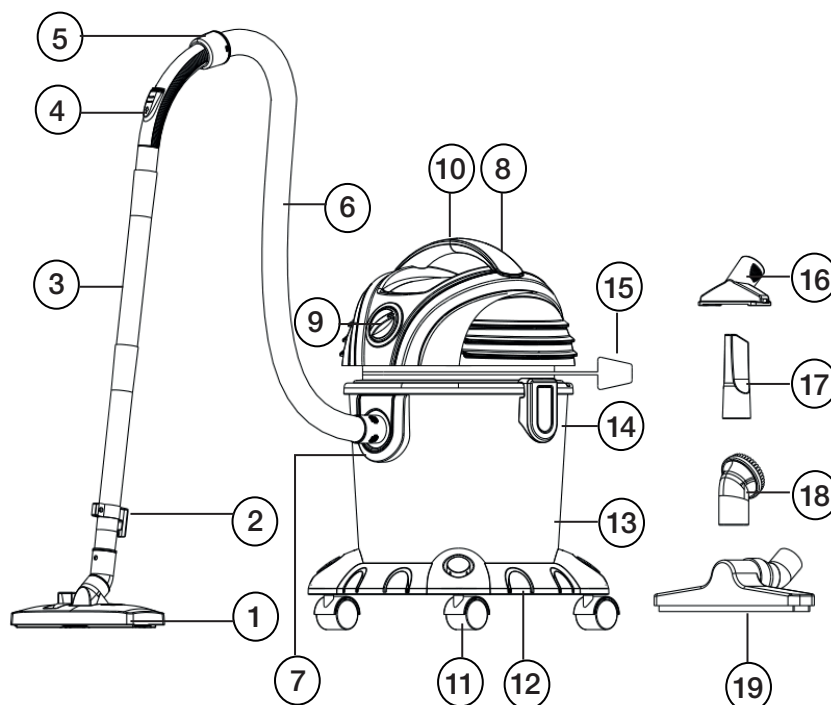
## 1. IMPORTANT SAFETY INSTRUCTIONS

When using your wet & dry vacuum cleaner, basic safety precautions should always be followed, including the following:

1. This appliance is intended for normal household use only.
2. Use only as described in this manual. Use only manufacturers recommended attachments.
3. Do not immerse the whole unit into the water or other liquids.
4. Never yank the cord to disconnect it from an outlet; instead, grasp plug and pull to disconnect.
5. Do not allow the cord to touch hot surfaces. Use extra care when cleaning on stairs. Do not run appliance over the cord. Do not operate the cleaner with a damaged cord or plug.
6. This appliance is not intended for use by persons (including children) with reduced physical, sensory or mental capabilities, or lack of experience and knowledge, unless they have been given supervision or instruction concerning use of the appliance by a person responsible for their safety.
7. Keep hair, loose clothing, fingers and all parts of body away from openings and moving parts.
8. Do not use this appliance to pick up flammable or combustible liquids such as petrol.
9. Do not pick up anything that is burning or smoking such as cigarettes, matches or hot ashes.
10. This unit should not be used to pick up liquids from containers, sinks, tubs, etc. It can be used to pick up liquids on floor or other surfaces only.
11. If the supply cord is damaged, it must be repaired by the manufacturer or its service agent or a similarly qualified person in order to avoid a hazard.
12. Please turn off all controls before unplugging from the electrical outlet. Do not leave the cleaner plugged in when unattended. Unplug the electrical cord when not in use and before servicing. Do not touch plug or vacuum with wet hands.
13. Store your appliance indoors in a cool, dry area.
14. Check that the mains voltage corresponds with the rating of the appliance before operating.
15. No liability can be accepted for any damage caused by noncompliance with these instructions or any other improper use or mishandling.

## 2. PARTS DESCRIPTION

1. Universal floor brush
2. Hook
3. Tube
4. Airflow control switch
5. Handle
6. Hose
7. Suction inlet
8. Switch
9. Speed control
10. Handle
11. Wheels
12. Base
13. Tank
14. Lock
15. Power cord
16. T-brush
17. Crevice Nozzle
18. Round brush
19. Water brush

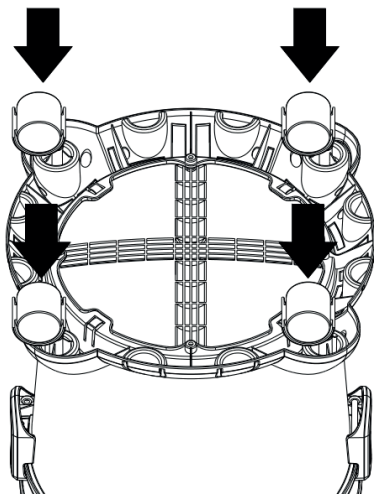


### 3. OPERATING INSTRUCTIONS

Note: Unplug and remove the electric plug from the socket before assembly or removal of accessories

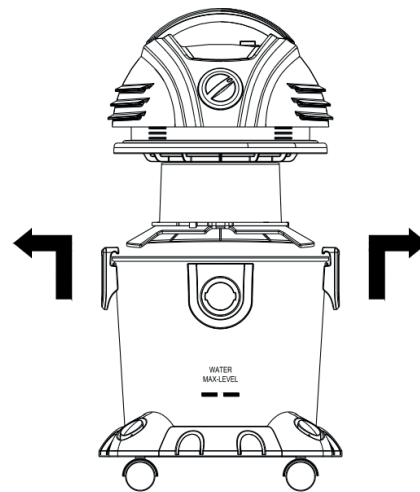
#### How to install the wheels

Insert the wheels into the bottom of the base and firmly press in.



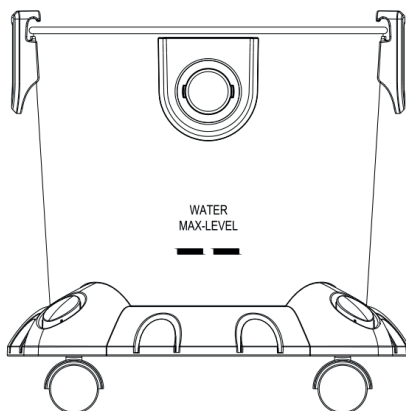
#### How to remove the head

Unclip the side-locks so that it does not catch onto the head at all and pull the head upwards to remove.



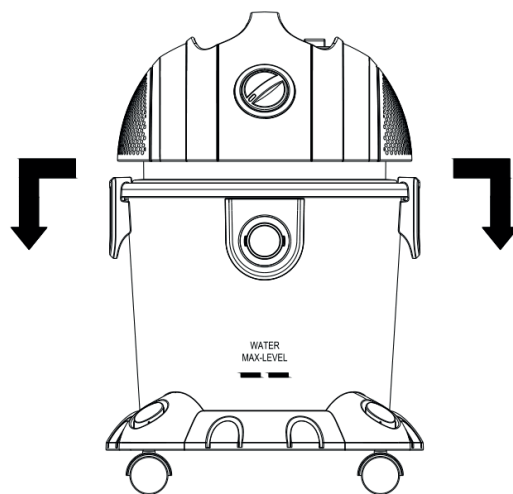
#### How to add water

For dry use, add water up to the MAX level.  
Do not exceed this level.  
For wet use, do not add water before use.  
Do not exceed MAX level.



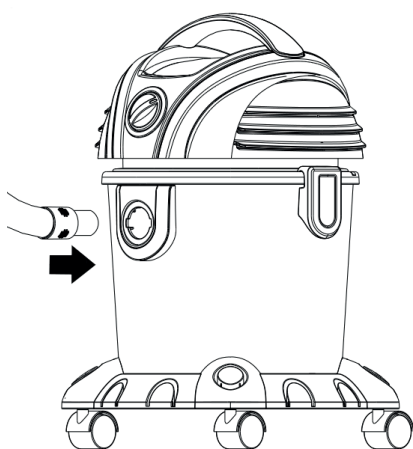
#### How to replace the head

Place the head on the tank and lock both clips securely into place

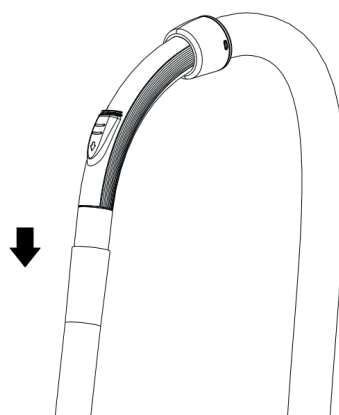


**How to insert the suction hose**

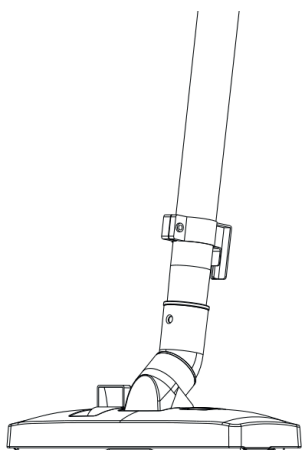
Insert the hose into the suction hole on the tank and turn right until secured.

**How to assemble the tubes**

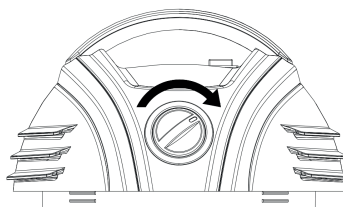
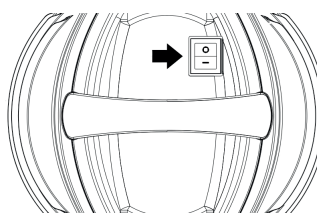
Insert the handle into the tubes as per the illustration

**How to connect the brush**

Insert the universal floor brush as per the below illustration

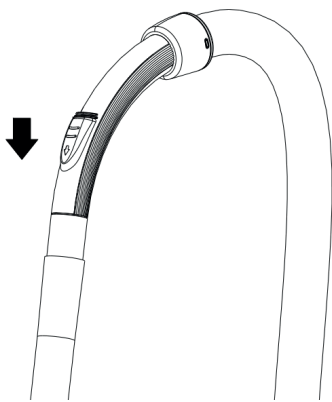
**How to start vacuuming**

Insert the switch to turn the item on/off. Turn clock/anti-clockwise to change the motor speed.



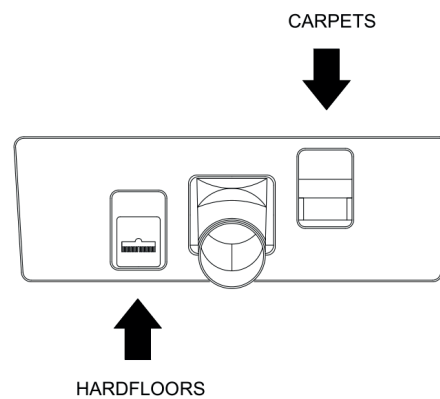
#### How to adjust the airflow

Open/close the airflow button  
to increase/decrease the airflow.



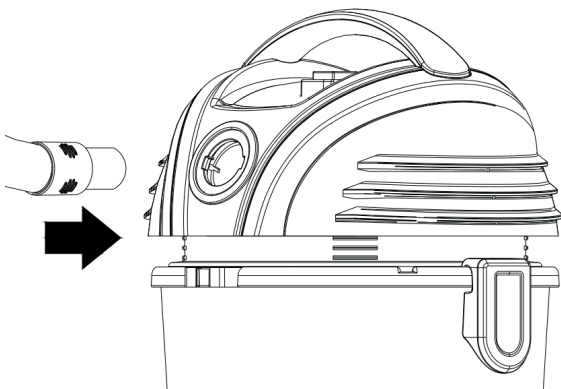
#### How to select carpets/hardfloors

See below illustration



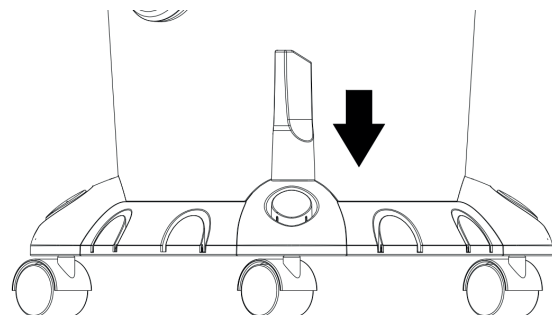
#### How to use blower function

Remove the cover of the blower hole  
at the back of the head.  
Connect the hose to the hole as shown



#### How to store the accessories

Put the accessories on the base  
which not in use.



#### 4. FILTER CLEANING

If you notice a drop in suction power or the machine is running at a higher pitch than usual, it may be time to clean the filter. Remove the motor head. At the bottom of the head (which will normally be inside the tank), remove the black base by turning it anti-clockwise to remove. The filter may be washed under cold water with no detergents and must be dried completely before replacing.

#### 5. IMPORTANT INFORMATION FOR CORRECT DISPOSAL OF THE PRODUCT



At the end of its working life, the product must not be disposed of as urban waste. It must be taken to a special local authority differentiated waste collection centre or to a dealer providing this service. Disposing of a household appliance separately avoids possible negative consequences for the environment and health deriving from inappropriate disposal and enables the constituent material to be recovered to obtain significant saving in energy and resources. As a reminder of the need to dispose of household appliances separately, the product is marked with a crossed-out wheeled dustbin.

#### 6. TECHNICAL DATA

##### **DAWF15L**

**Max power:** 1400 W

**Rated power:** 1200 W

**Tank capacity:** 15 L

**Vacuity:**  $\geq 19$  kPa

**Suction hose diameter:** 32 mm

**Suction hose length:** 1.5 m

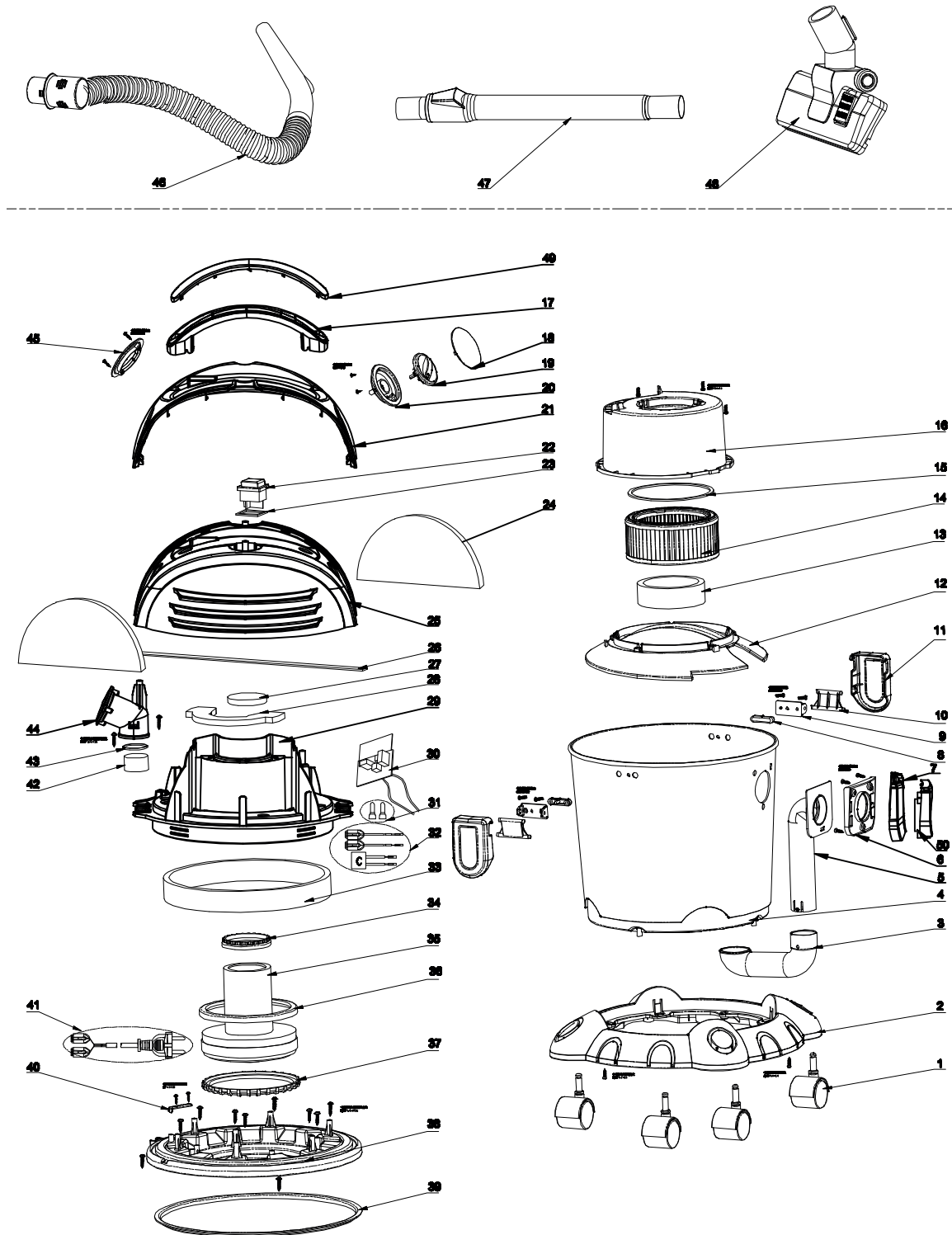
**Airflow rate:**  $\geq 1.5$  m<sup>3</sup>/min

**Suction power:** 170 W

**Power cord length:** 5 m

**Noise level:** 85 db

## 7. EXPLODE VIEW AND PART LIST





Item No.	English Description	Item No.	English Description
1	universal wheels	27	filter sponge for cool inlet air
2	dust container supporter	28	filter sponge for cool outlet air
3	air outlet pipe	29	motor cover
4	dust container	30	PCB
5	air inlet pipe	31	string nip
6	guide supporter	32	wire assembly
7	suction seat	33	silence sponge
8	tache connector screw base	34	motor rear seal ring
9	tache connector base	35	motor
10	tache connector	36	motor middle seal ring
11	tache	37	motor front seal ring
12	water stop plate	38	motor base
14	HEPA filter	39	bucket seal ring
15	HEPA filter seal	40	cord clamber
16	water stop mop	41	power cord
17	handle	42	spong for blow connector
19	speed control	44	blow connector
20	speed control stand	45	blow stand
21	decoration cover of bucket cap	46	hose assy
22	power switch	47	tube
23	power switch seal	48	floor brush
24	sponge filter of bucket cap	49	handle cover
25	bucket cap	50	suction seat base
26	seal of bucket cap		

## WARRANTY CARD

<div></div>	<div></div>
Product model	Date of sale
<div></div>	<div></div>
Serial number	Company
<div></div>	<div></div>
Username	Client's signature

The product is in good conditions and fully complete. Read and agree the terms of the warranty.

## GUARANTEE

The warranty period starts from the date of sale of the products and covers 1 year for all power products.

During the warranty period, free failures caused due to the use of poor-quality materials in the production and manufacturer workmanship admitted fault are removed. The guarantee comes into force only when warranty card and cutting coupons are properly filled. The product is accepted for repair in its pure form and full completeness.

## WARRANTY DOES NOT COVER

- Mechanical damage (cracks, chips, etc.) and damage caused by exposure to aggressive media, foreign objects inside the unit and air vents, as well as for damage occurred as a result of improper storage (corrosion of metal parts);
- Failures caused by overloading or product misuse, use of the product for other purposes. A sure sign of overload products is melting or discoloration of parts due to the high temperature, simultaneous failure of two or more nodes, teaser on the surfaces of the cylinder and the piston or destruction of piston rings. Also, the warranty does not cover failure of the automatic voltage regulator due to incorrect operation;
- Failure caused by clogging of the fuel and cooling systems;
- Wearing parts (carbon brushes, belts, rubber seals, oil seals, shock absorbers, springs, clutches, spark plugs,

mufflers, nozzles, pulleys, guide rollers, cables, recoil starter, chucks, collets, removable batteries, filters and safety elements, grease, removable devices, equipment, knives, drills, etc.);

- Electrical cables with mechanical and thermal damage;
- Product opened or repaired by a non-authorized service center.
- Prevention, care products (cleaning, washing, lubrication, etc.), installation and configuration of the product;
- Natural wear products (production share);
- Failures caused by using the product for the needs related to business activities;
- If the warranty card is empty or missing seal (stamp) of the Seller;
- The absence of the holder's signature on the warranty card.

**DAEWOO**

**DAEWOO**

**DAEWOO**

<div></div>	Product	<div></div>	Product	<div></div>
<div></div>	Model	<div></div>	Model	<div></div>
<div></div>	Company	<div></div>	Company	<div></div>
<div></div>	Date of sale	<div></div>	Date of sale	<div></div>



**DAEWOO**  
POWER PRODUCTS

[www.daewoopowerproducts.com](http://www.daewoopowerproducts.com)

Manufactured under license of Daewoo International Corporation, Korea